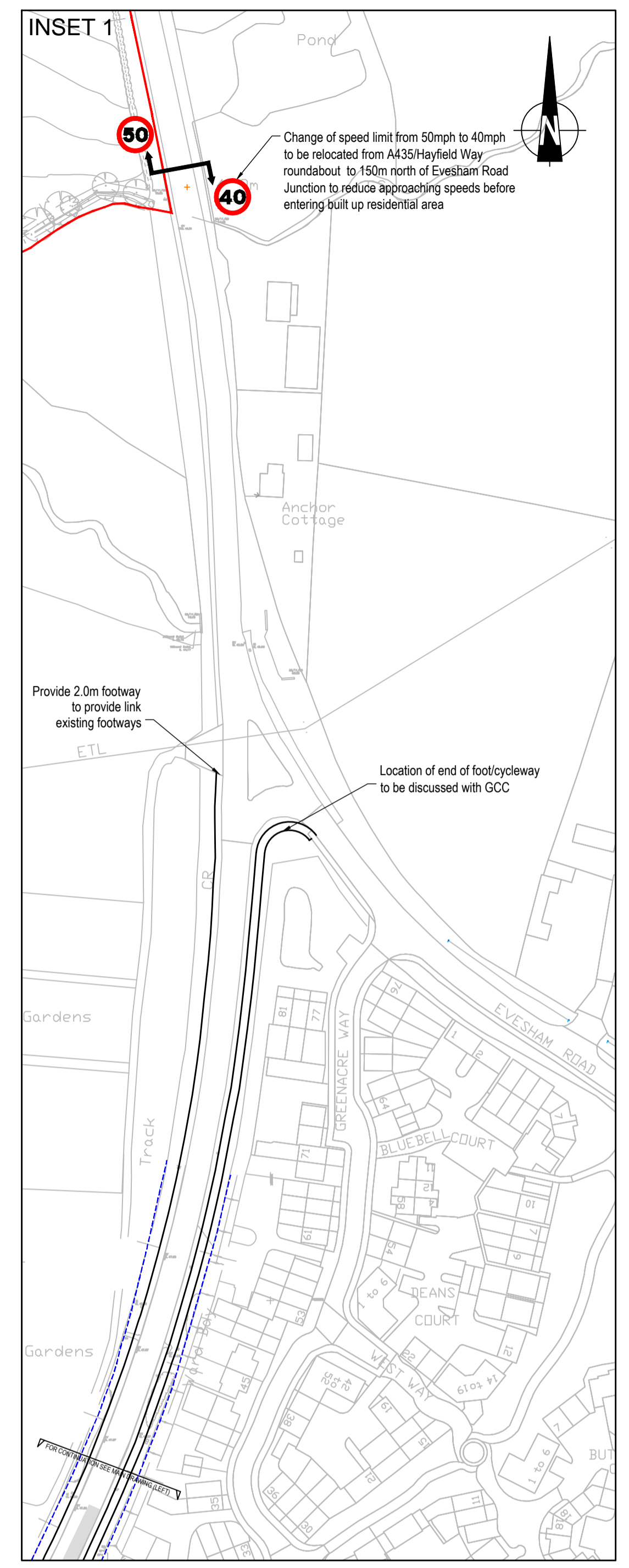
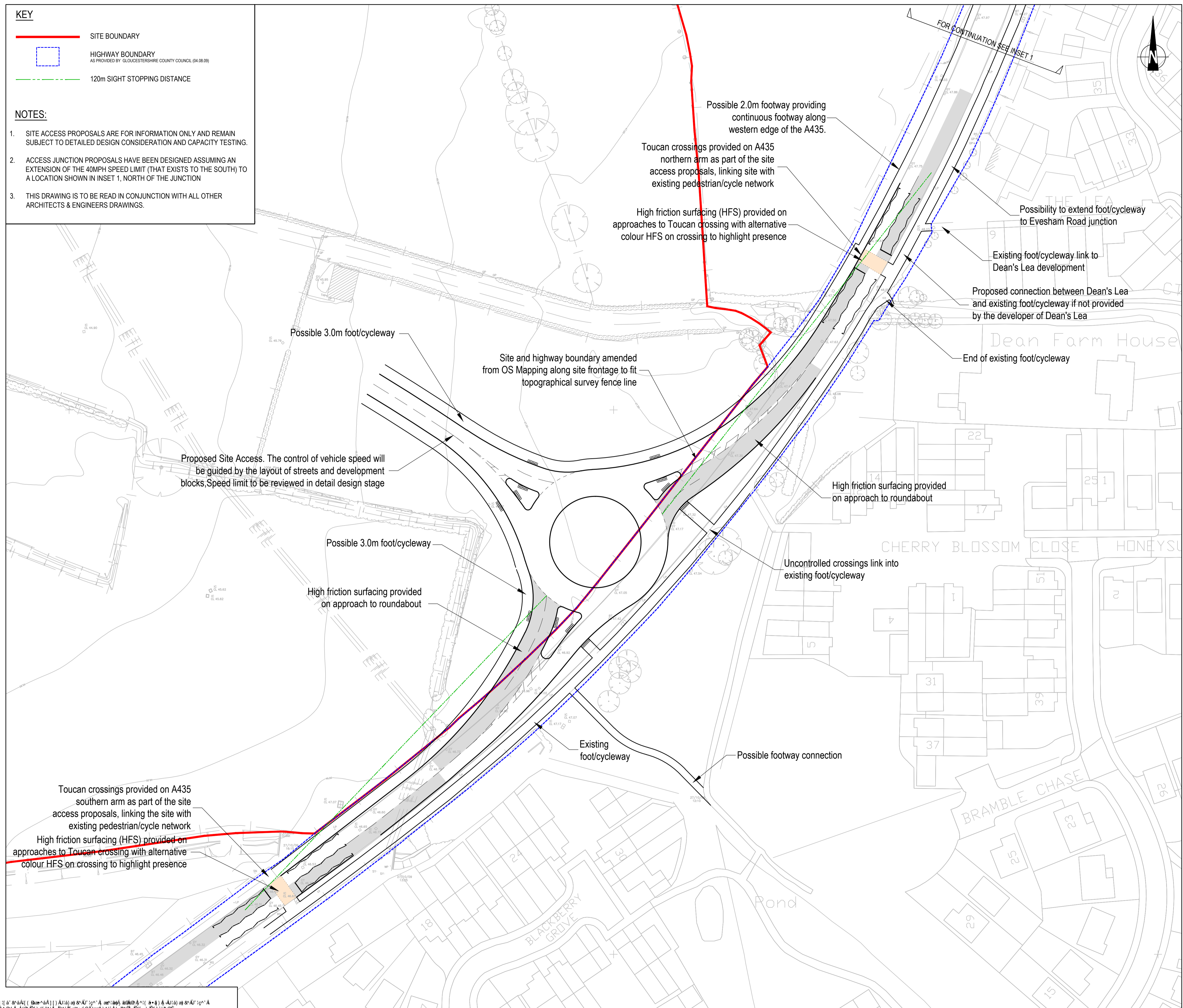


**KEY**

- SITE BOUNDARY
- HIGHWAY BOUNDARY AS PROVIDED BY GLOUCESTERSHIRE COUNTY COUNCIL (04.08.09)
- 120m SIGHT STOPPING DISTANCE

**NOTES:**

- SITE ACCESS PROPOSALS ARE FOR INFORMATION ONLY AND REMAIN SUBJECT TO DETAILED DESIGN CONSIDERATION AND CAPACITY TESTING.
- ACCESS JUNCTION PROPOSALS HAVE BEEN DESIGNED ASSUMING AN EXTENSION OF THE 40MPH SPEED LIMIT (THAT EXISTS TO THE SOUTH) TO A LOCATION SHOWN IN INSET 1, NORTH OF THE JUNCTION
- THIS DRAWING IS TO BE READ IN CONJUNCTION WITH ALL OTHER ARCHITECTS & ENGINEERS DRAWINGS.



C	Revisions made following internal PBA review 18/10/10	PC	20.10.10	JM
B	Kerb line now shown. Amendment to foot/cycleway connection	JH	03.06.10	PR
A	TOPO ADDED. FOOTWAYS AND CYCLE WAYS ADDED.	PMR	30.04.10	NC
Mark	Revision	Drawn	Date	Chkd

SCALING NOTE: Do not scale from this drawing. If in doubt, ask.  
 UTILITIES NOTE: The position of any existing public or private sewers, utility services, plant or apparatus shown on this drawing is believed to be correct, but no warranty to this is expressed or implied. Other such plant or apparatus may also be present but not shown. The Contractor is therefore advised to undertake his own investigation where the presence of any existing sewers, services, plant or apparatus may affect his operations.

Drawing Issue Status  
**Final (see Transport Assessment, Oct 2010)**

**CLEVELANDS  
 BISHOPS CLEEVE**

**SITE ACCESS - ROUNDABOUT OPTION**

Client <b>Welbeck Strategic Land</b>		 Offices throughout the UK, continental Europe, Africa and Asia <b>www.peterbrett.com</b> © Peter Brett Associates LLP BRISTOL Tel: 0117 928 1560 Fax: 0117 928 1570
Date of 1st Issue FEBRUARY 2010	Drawn by AJT	
A1 Scale 1:500	Checked by NC	
Drawing Number <b>22820/101/SK02</b>	Revision <b>C</b>	

Unauthorised reproduction infringes Crown Copyright and may lead to prosecution or civil proceedings.  
 Licence No. 100017853 Year of Publication: 2009 Owner/Purchaser of Mapping: PBA